

## Instruction 560-0013

02-09-2011

All rights reserved.  
Printed in the U.S.A.



845-744-4889  
www.lloydz.com

25 Railroad Ave  
PO Box 11  
Pine Bush, NY 12566

# Installation Instructions for Lloydz Variable Pressure Plate Clutch Kit PN 560-0013 for Victory® Motorcycles

### DISCLAIMER:

These parts are designed for high performance, closed course, racing applications and are intended for the very experienced rider only. The installation of these parts may void or adversely affect your factory warranty. In addition such installation and use may violate certain federal, state, and local laws, rules and ordinances as well as other laws when used on motor vehicles used on public highways, especially in states where pollution laws may apply. Always check federal, state, and local laws before modifying your motorcycle. It is the sole and exclusive responsibility of the user to determine the suitability of the product for his or her use, and the user shall assume all legal, personal injury risk and liability and all other obligations, duties, and risks associated therewith.

The words Victory®, Victory Freedom®, and all Victory part numbers and model designations are used for reference only.

### IMPORTANT NOTICE:

Statements in this instruction sheet preceded by the following words are of special significance.



WARNING

Means there is the possibility of injury to yourself or others.



CAUTION

Means there is the possibility of damage to the part or motorcycle.

NOTE

*Other information of particular importance has been placed in italic type.*

Lloydz recommends you take special notice of these items.

### SAFE INSTALLATION AND OPERATION RULES:

Before installing your new Lloydz part it is your responsibility to read and follow the installation and maintenance procedures in these instructions and follow the basic rules below for your personal safety.

- Gasoline is extremely flammable and explosive under certain conditions and toxic when breathed. Do not smoke. Perform installation in a well ventilated area away from open flames or sparks.
- If motorcycle has been running, wait until engine and exhaust pipes have cooled down to avoid getting burned before performing any installation steps.
- Before performing any installation steps disconnect battery to eliminate potential sparks and inadvertent engagement of starter while working on electrical components.
- Read instructions thoroughly and carefully so all procedures are completely understood before performing any installation steps. Contact S&S with any questions you may have if any steps are unclear or any abnormalities occur during installation or operation of motorcycle with a S&S part on it. Consult an appropriate service manual for your motorcycle for correct disassembly and reassembly procedures for any parts that need to be removed to facilitate installation.
- Use good judgment when performing installation and operating motorcycle. Good judgment begins with a clear head. Don't let alcohol, drugs or fatigue impair your judgment. Start installation when you are fresh.
- Be sure all federal, state and local laws are obeyed with the installation.
- For optimum performance and safety and to minimize potential damage to carb or other components, use all mounting hardware that is provided and follow all installation instructions.
- Motorcycle exhaust fumes are toxic and poisonous and must not be breathed. Run motorcycle in a well ventilated area where fumes can dissipate.

### WARRANTY:

All parts are guaranteed to the original purchaser to be free of manufacturing defects in materials and workmanship for a period of twelve (12) months from the date of purchase. Merchandise that fails to conform to these conditions will be repaired or replaced at Lloydz's option if the parts are returned to us by the purchaser within the 12 month warranty period or within 10 days thereafter.

In the event warranty service is required, the original purchaser must call or write Lloydz immediately with the problem. Some problems can be rectified by a telephone call and need no further course of action.

A part that is suspect of being defective must not be replaced by a Dealer without prior authorization from Lloydz. If it is deemed necessary for Lloydz to make an evaluation to determine whether the part was defective, a return authorization number must be obtained from Lloydz. The parts must be packaged properly so as to not cause further damage and be returned prepaid to Lloydz with a copy of the original invoice of purchase and a detailed letter outlining the nature of the problem, how the part was used and the circumstances at the time of failure. If after an evaluation has been made by Lloydz and the part was found to be defective, repair, replacement or refund will be granted.

### ADDITIONAL WARRANTY PROVISIONS:

- (1) Lloydz shall have no obligation in the event a Lloydz part is modified by any other person or organization.
- (2) Lloydz shall have no obligation if a Lloydz part becomes defective in whole or in part as a result of improper installation, improper maintenance, improper use, abnormal operation, or any other misuse or mistreatment of the Lloydz part.
- (3) Lloydz shall not be liable for any consequential or incidental damages resulting from the failure of a Lloydz part, the breach of any warranties, the failure to deliver, delay in delivery, delivery in non-conforming condition, or for any other breach of contract or duty between Lloydz and a customer.
- (4) These Lloydz parts are designed exclusively for use in Victory motorcycles. Lloydz shall have no warranty or liability obligation if a Lloydz part is used in any other application.

## Kit Contents

- Variable pressure clutch plate
- Customer modified inner clutch hub with Lloydz billet steel adapter installed



Picture 1

## Special Tool Requirements

- Victory® service manual – Available through a Polaris® dealer
- Victory Clutch Service Tool PN – PV-45032
- Arbor or shop press

The PN 560-0013 variable pressure plate clutch is intended for all 2003 and up Freedom® engines.

### **⚠ WARNING**

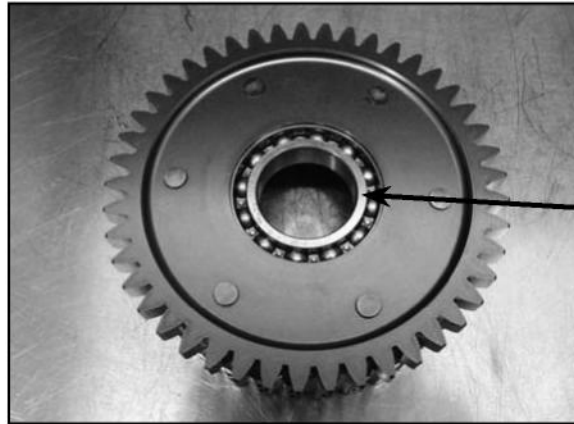
- **The safety of the motorcycle rider is dependent on proper installation of this product. If you are not certain of your capabilities or do not have the correct tools for this installation, please consult a dealer to have it done. Improper installation of this product could result in injury or death to the rider.**
  - **Be sure to disconnect the battery of your motorcycle before starting on this procedure. Accidental starting of the motorcycle could cause injury to you or others around you during the installation.**
- 1- Disconnect the negative battery cable from the motorcycle and route it away from any metal parts in the area.
  - 2- Remove the primary cover from the Victory motorcycle you're performing the work on following your Victory service manual.

## Inner Clutch Hub Assembly



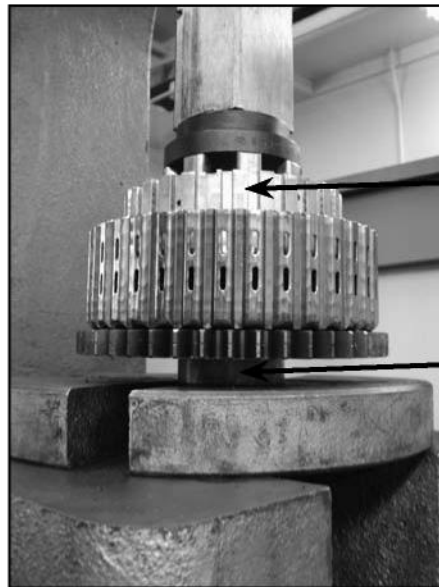
Always wear eye protection when removing or installing snap rings to avoid injury to the eyes.

- 1- Locate the modified inner clutch hub in the variable pressure plate clutch kit. **Picture 1** on the previous page illustrates the S&S® modified inner clutch hub.
- 2- With the clutch assembly that you disassembled lying on your bench, locate the clutch basket.
- 3- Press the modified stock inner clutch hub into the clutch basket. When pressing the inner hub into the clutch basket it is recommended that you support the clutch basket inner bearing race with a piece of tubing. The tubing should have a minimum length of .750" and the ID of the tubing should be slightly larger than the inner hub splined boss so that it can pass through with out contacting the tubing. **Picture 2** illustrates the clutch basket inner bearing race. Press the inner clutch hub into the clutch basket using an arbor press. **Picture 3** illustrates the inner hub being pressed into the clutch basket.



Inner bearing race that needs to be supported.

Picture 2

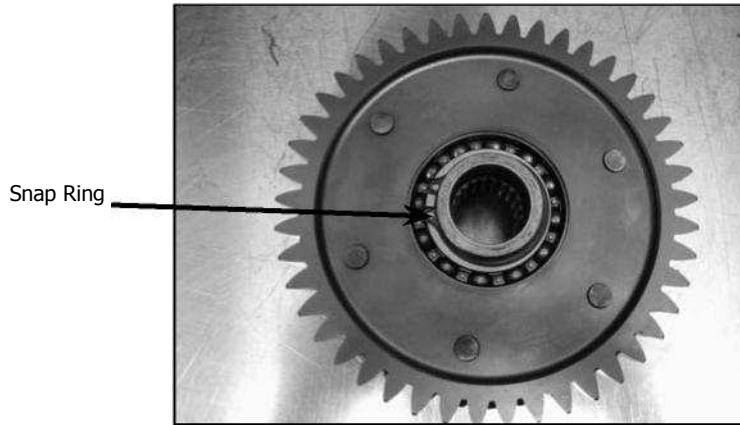


Inner Hub

Tubing

Picture 3

4- Once the inner clutch hub has been installed into the clutch basket, install the snap ring into the snap ring groove on the back side of the inner clutch hub. **Picture 4** illustrates the snap ring installed on the inner clutch hub.



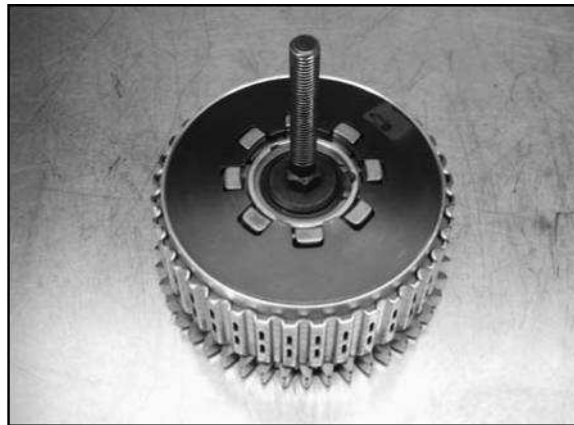
**Picture 4**

### **Clutch Plate Assembly**

1- Install judder spring seat, judder spring, friction and steel plates into the clutch basket following your Victory® service manual.

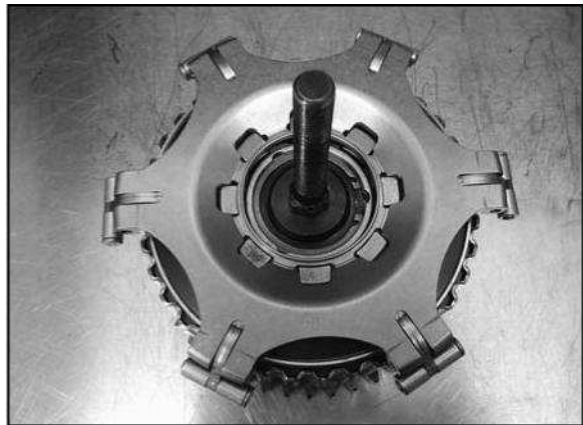
### **Lloydz Variable Pressure Plate Assembly**

- 1- Install stock Victory clutch pressure plate on top of the clutch pack followed by the stock Victory (Green) clutch diaphragm spring, with concave side down, on top of the pressure plate.
- 2- Using Polaris® special tool PV-45032 – Clutch Spring Compressor, install clutch spring compressor threaded rod into the clutch pressure plate, where the rack was located, followed by the clutch rack snap ring. **Picture 5** illustrates the threaded rod installed into the clutch pressure plate.



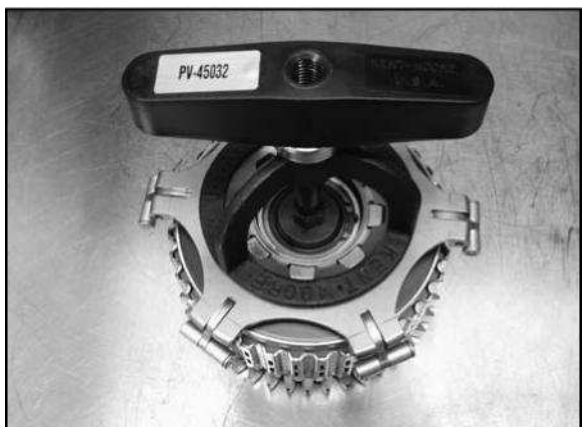
**Picture 5**

3- Place the Lloydz Variable Pressure Plate on top of the diaphragm spring aligning it with the steel towers of the inner hub. **Picture 6** illustrates the variable pressure plate aligned and ready to compress.



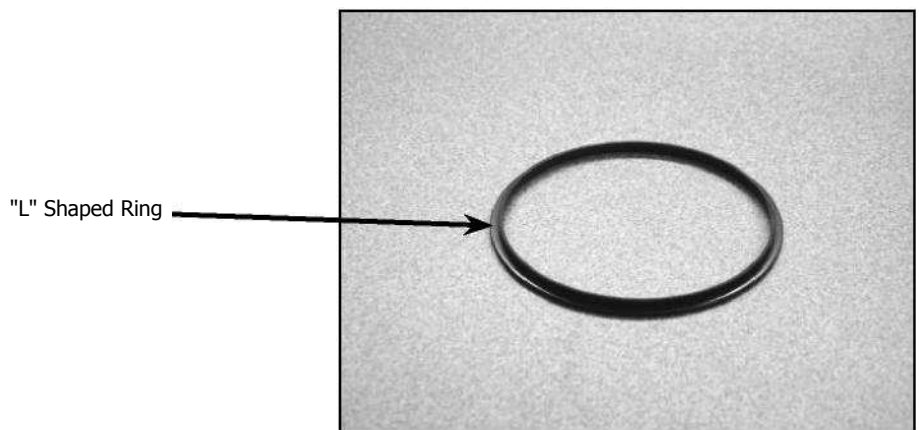
**Picture 6**

4- Install the spring compressor bridge, bearing, and T-handle over the threaded post as illustrated in **Picture 7**.



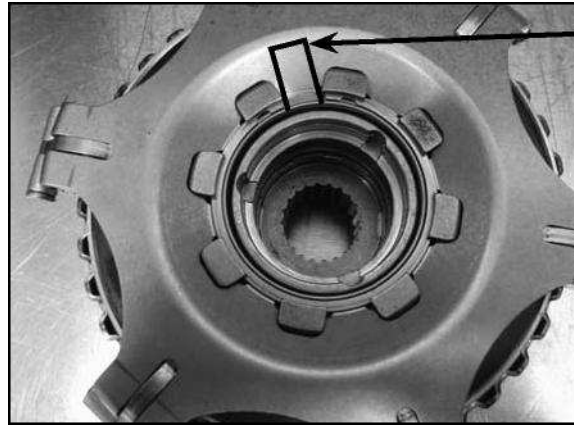
**Picture 7**

**NOTE:** The "L" shaped retaining ring retainer that was removed at clutch disassembly will not be used when installing the Lloydz Variable Pressure Clutch Plate. The "L" shaped retaining ring is built into the Lloydz Variable Pressure Clutch Plate. **Picture 8** illustrates the "L" shaped ring.



**Picture 8**

- 5- Compress the diaphragm spring by tightening down the T-handle on the Victory® clutch spring compressor tool so retaining ring can be installed.
- 6- With the sharp edge of the retaining ring facing upward, install the stock Victory retaining ring into the machined groove on the inner hub. Position the retaining ring so one end is located on one side of a post. **Picture 9** illustrates the retaining ring properly positioned and installed.

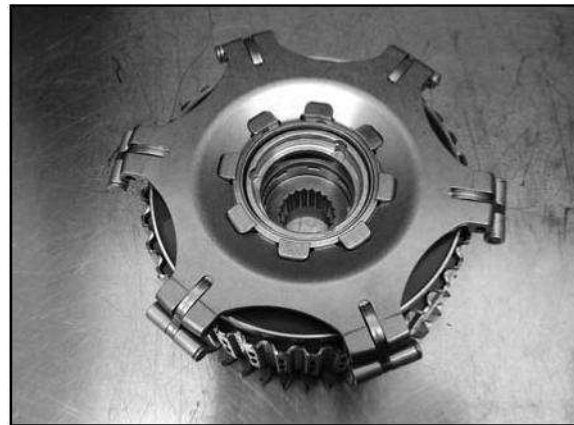


Retaining Ring Ends

**Picture 9**

- 7- After retaining ring is properly installed, slowly release pressure from the clutch spring compressor tool guiding the “L” shaped flange on the Lloydz pressure plate into position under the retaining ring.
- 8- Remove spring compressor tool completely. **Picture 10** illustrates the Lloydz Variable Pressure Plate installed properly onto the clutch assembly.

**Clutch and Primary Installation**

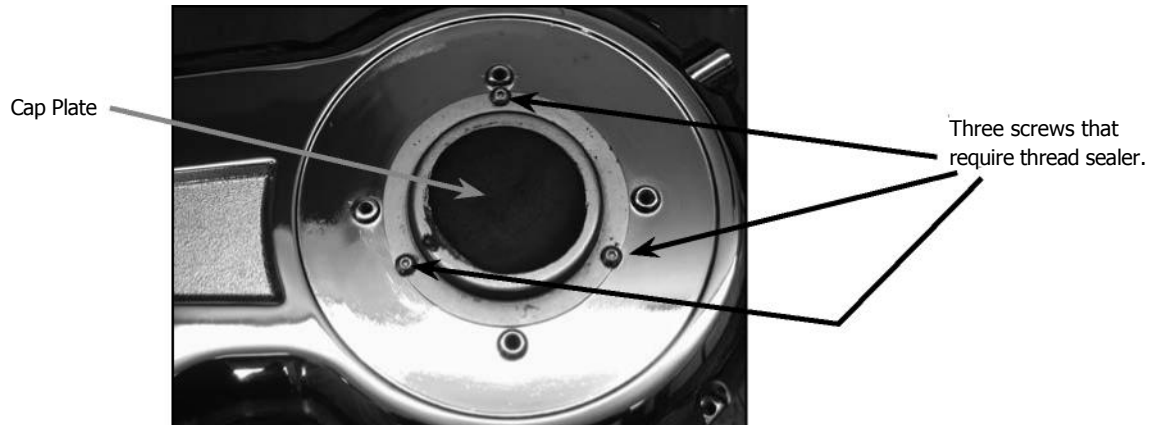


**Picture 10**

- 1- Install clutch assembly onto clutch shaft following your Victory® service manual.
- 2- Install clutch rack (lifter assembly) following your Victory service manual.
- 3- Install the stator into the primary cover that was removed at disassembly.

**NOTE:** Primary covers for model year 2003-2007 will require Teflon tape or similar thread sealer applied to the threads of the three screws that hold the cap plate to the primary. **Picture 11** illustrates the three screws and the cap plate.

**Picture 11**



- 5- Once primary cover is installed you will need to check your clutch lever free play and adjust if necessary following your Victory service manual.
- 6- Check engine oil and fill to proper level.
- 7- Test drive motorcycle.
- 8- Thank you for choosing Lloydz Performance Products.